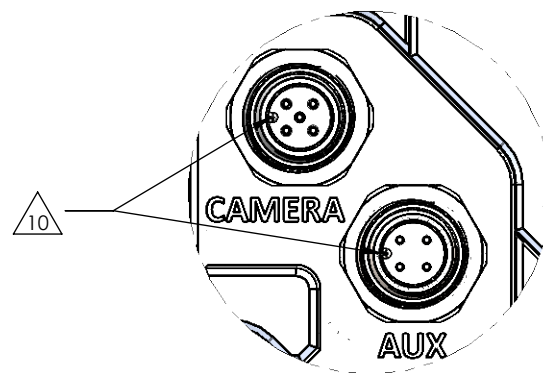
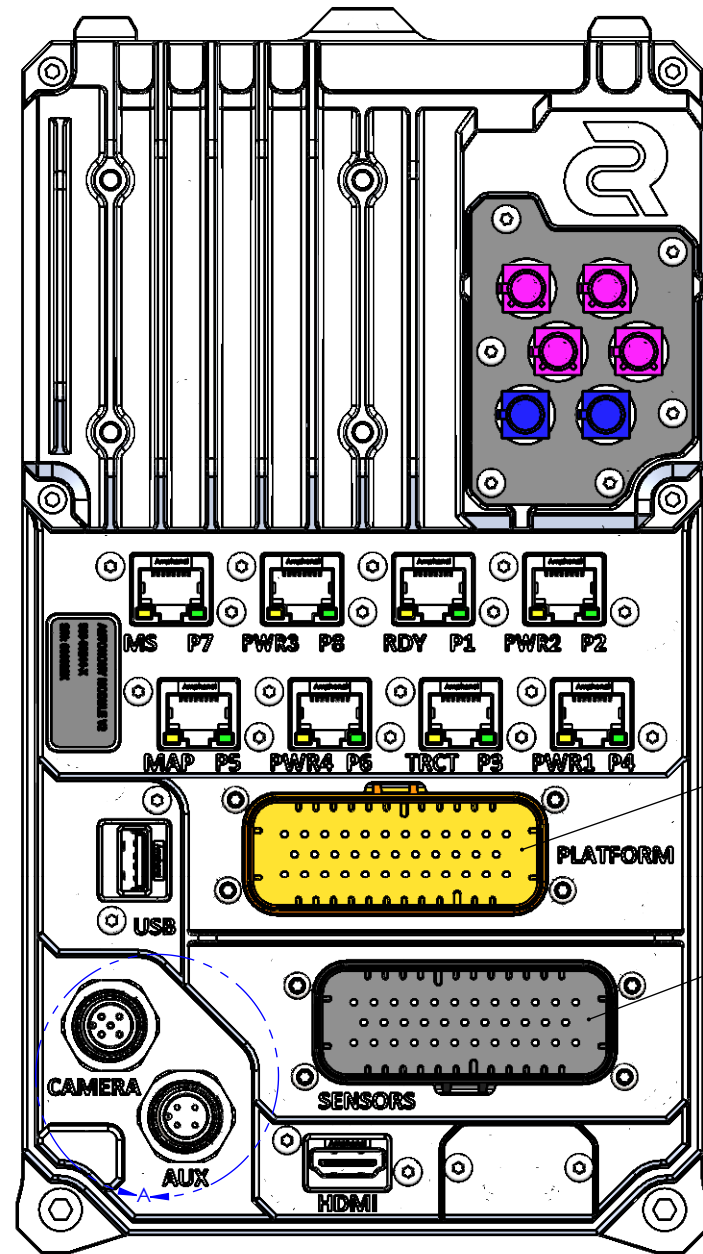


PLATFORM TE 1-77623-6 CONTACT PLATING: GOLD	
PIN	SIGNAL
1	ENC.3A
2	ENC.3B
3	CAN-L
4	CAN-H
5	STR ENC
6	4-20 ENC
7	ENC.4A
8	CHASSIS
9	ENC.1A
10	24V
11	ENC.2A
12	ENC.4B
13	GND
14	INTRLCK L
15	INTRLCK R
16	ENC GND
17	ENC.2B
18	ENC.1B
19	ENC GND
20	INTRLCK T
21	KSI
22	B-
23	B+
24	KSI Out
25	KSI&ESTOP
26	OP PRES
27	MC RS1
28	MC RS2
29	LIFT REQ
30	LOWER REQ
31	HANDLE IMPCT
32	INTLK SPR
33	SPARE 1
34	SPARE 2
35	NRZ DO

SENSOR TE 1-77623-1 CONTACT PLATING: GOLD	
PIN	SIGNAL
1	PWR 1
2	GND 1
3	INA P
4	INA N
5	INB P
6	INB N
7	INC P
8	INC N
9	IND P
10	IND N
11	INE P
12	INE N
13	OSSD1A
14	OSSD2A
15	OSSD3A
16	OSSD4A
17	OSSD1B
18	OSSD2B
19	OSSD3B
20	OSSD4B
21	PWR 2
22	GND 2
23	MAP SYNC II
24	4-20 E
25	4-20 F
26	4-20 G
27	4-20 A
28	4-20 B
29	4-20 C
30	4-20 D
31	PWR 3
32	GND 3
33	PWR 4
34	GND 4
35	CHASSIS

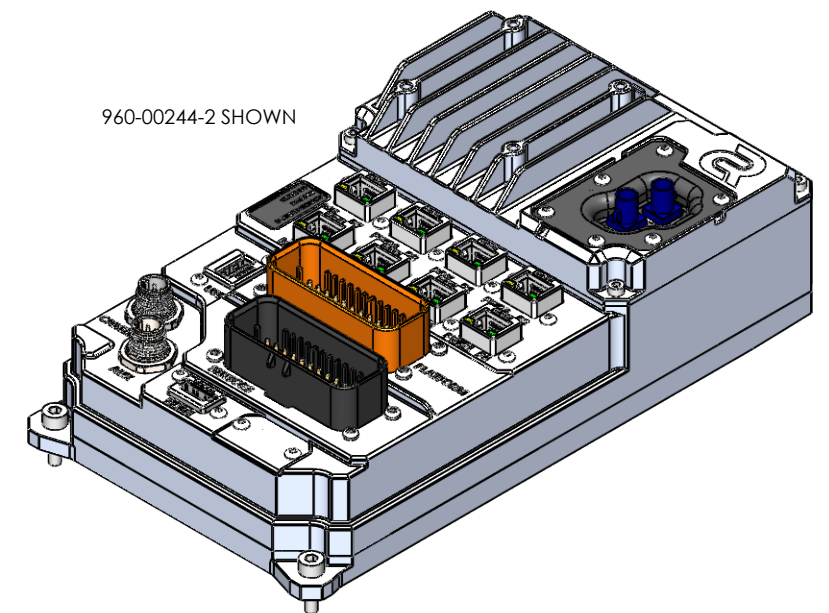
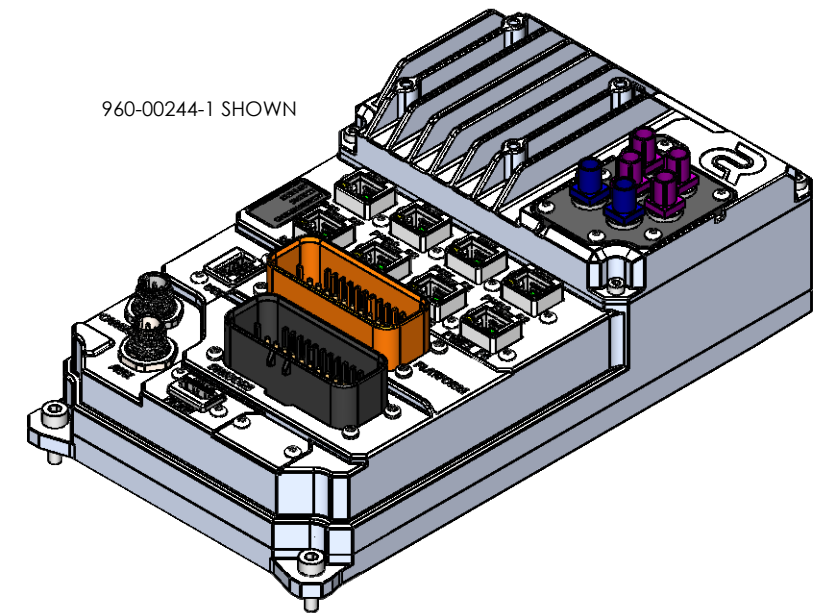
CAMERA M12	
PIN	SIGNAL
1	24V
2	MS SYNC
3	GND
4	
5	GND

AUX M12	
PIN	SIGNAL
1	24V
2	MAP SYNC I
3	GND
4	



DETAIL A
SCALE 1:1

REVISION HISTORY			
REV	DESCRIPTION	DATE	APPROVED
A	INITIAL RELEASE ECR-664	2022-09-27	
B	ADDED SOFTWARE AND DIMENSIONS PER ECR-815	2023-04-21	AJG



PART NUMBER	DESCRIPTION
960-00244-1	ICD, AUTONOMY MODULE, GEN, WITH 5G
960-00244-2	ICD, AUTONOMY MODULE, GEN, WITHOUT 5G

NOTES (UNLESS OTHERWISE SPECIFIED):

- WEIGHT: ~2.0 KG
- HOUSING MATERIAL: ALUMINUM
- COATING: CHROMATE CONVERSION
- INPUT VOLTAGE: 20-50 VDC
- MAXIMUM CURRENT DRAW: 6 AMPS AT 26 VOLTS
- OPERATING TEMP: 0-50 C
- ENVIRONMENTAL SEALING: IP65
- MATING 35 PIN CONNECTOR WITH GOLD CONTACTS: TE 776164-6
- MATING 35 PIN CONNECTOR WITH GOLD CONTACTS: TE 776164-1
- CLOCKING FEATURE LOCATION
- USE TORQUE WRENCH TO TIGHTEN MATING M12 CABLE NUT TO 0.4 Nm - 0.8 Nm
- WIFI ANTENNA FREQUENCY: 2.4 GHz, 5.8-7.125 GHz
- CELLULAR ANTENNA FREQUENCY: 600 - 6000 MHZ

Carnegie Robotics
4501 HATFIELD STREET
PITTSBURGH, PA 15201
CARNEGIEROBOTICS.COM
CAGE CODE: 4QND3

THE INFORMATION CONTAINED IN THIS DRAWING IS THE SOLE PROPERTY OF CARNEGIE ROBOTICS LLC. ANY REPRODUCTION IN PART OR AS A WHOLE WITHOUT THE WRITTEN PERMISSION OF CARNEGIE ROBOTICS LLC IS PROHIBITED.

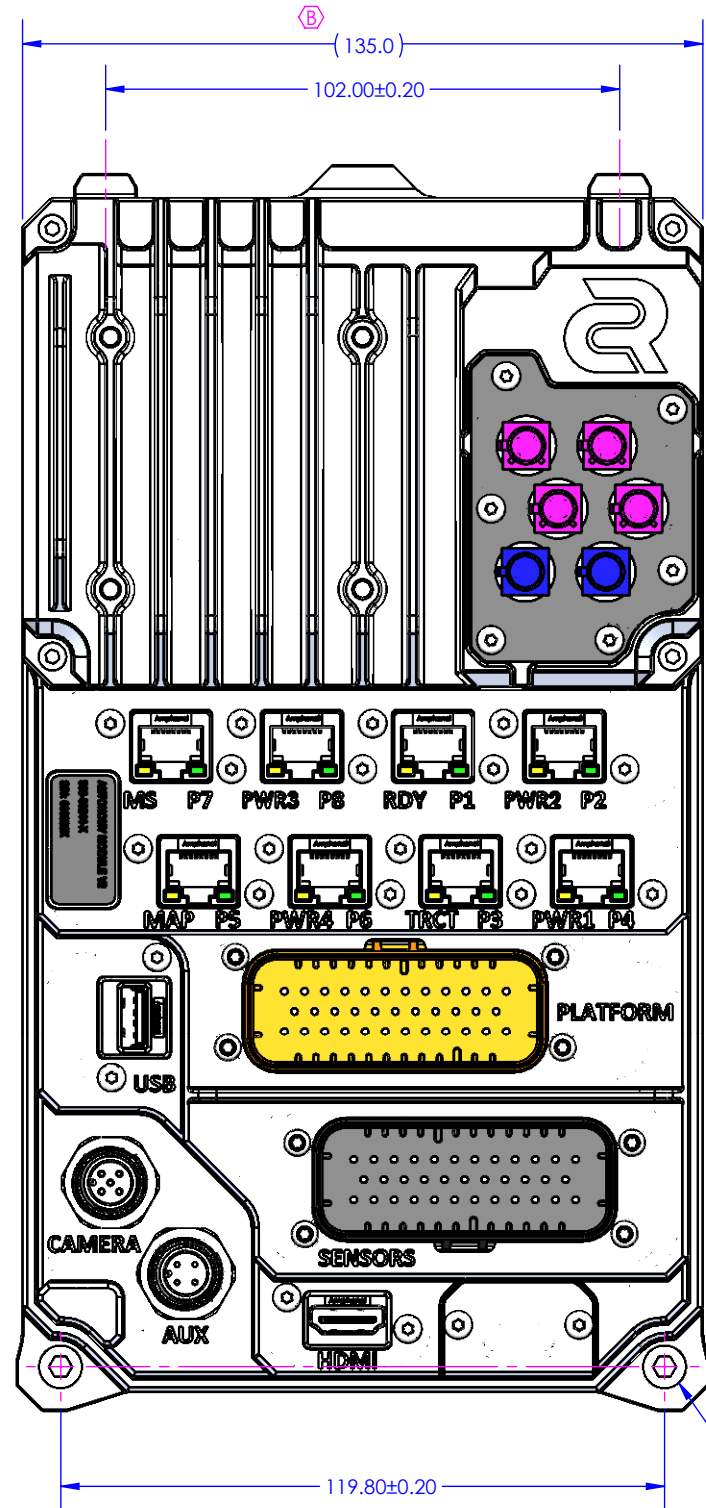
	ENGR	DATE
DRAWN	DR	2022-09-27
CHECKED	AJG	2022-09-30
ENGR	DR	2022-09-27
APPROVED	AJG	2022-09-30

UNLESS OTHERWISE SPECIFIED DIMENSIONS ARE IN MILLIMETERS
TOLERANCES: ANGULAR ± 0.5° SURFACE FINISH: 1.6
X ± 1.3
X.X ± 0.5
X.XX ± 0.13

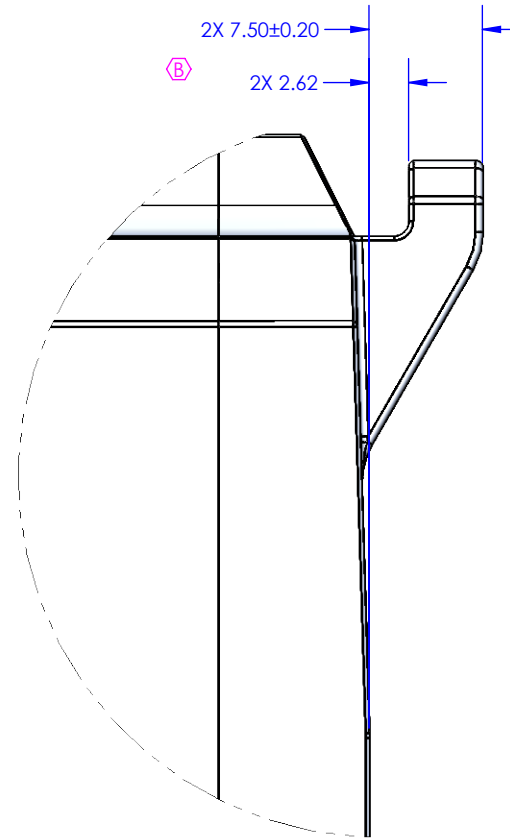
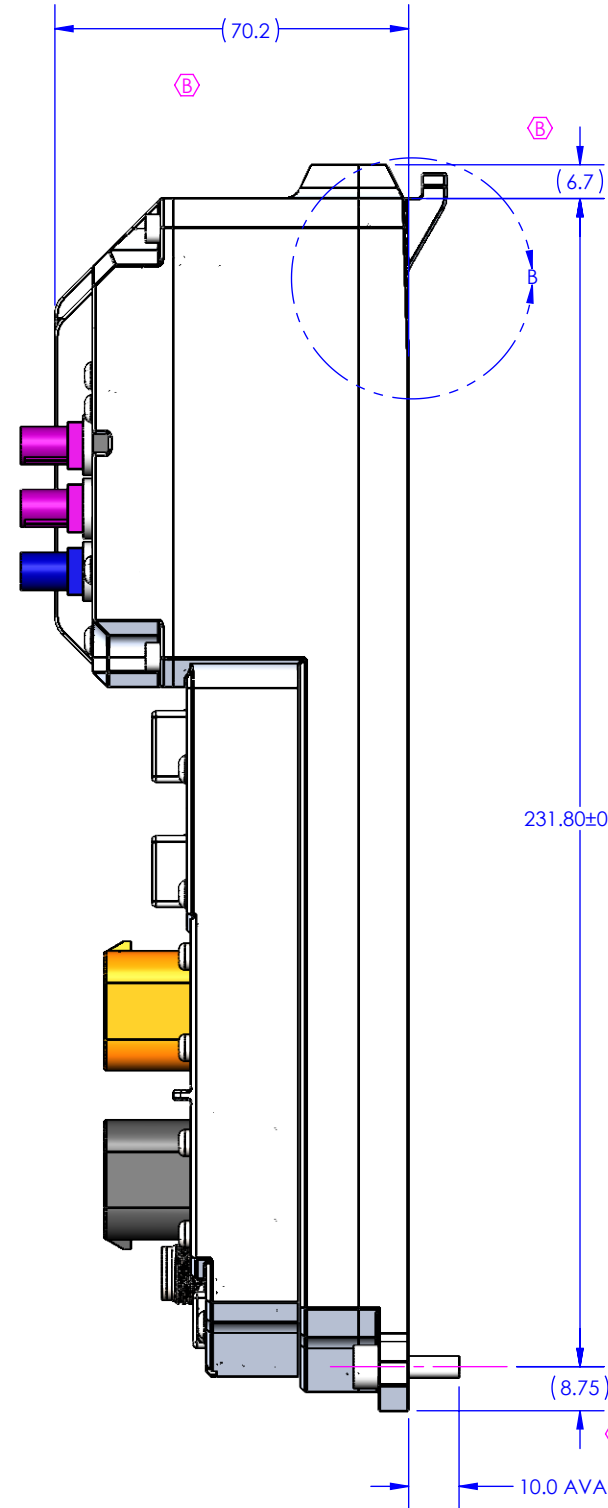
ICD, AUTONOMY MODULE, GEN

SIZE B	PART NUMBER 960-00244	REV B
MATERIAL N/A	FINISH SEE NOTE	DO NOT SCALE
		SHEET 1 OF 2

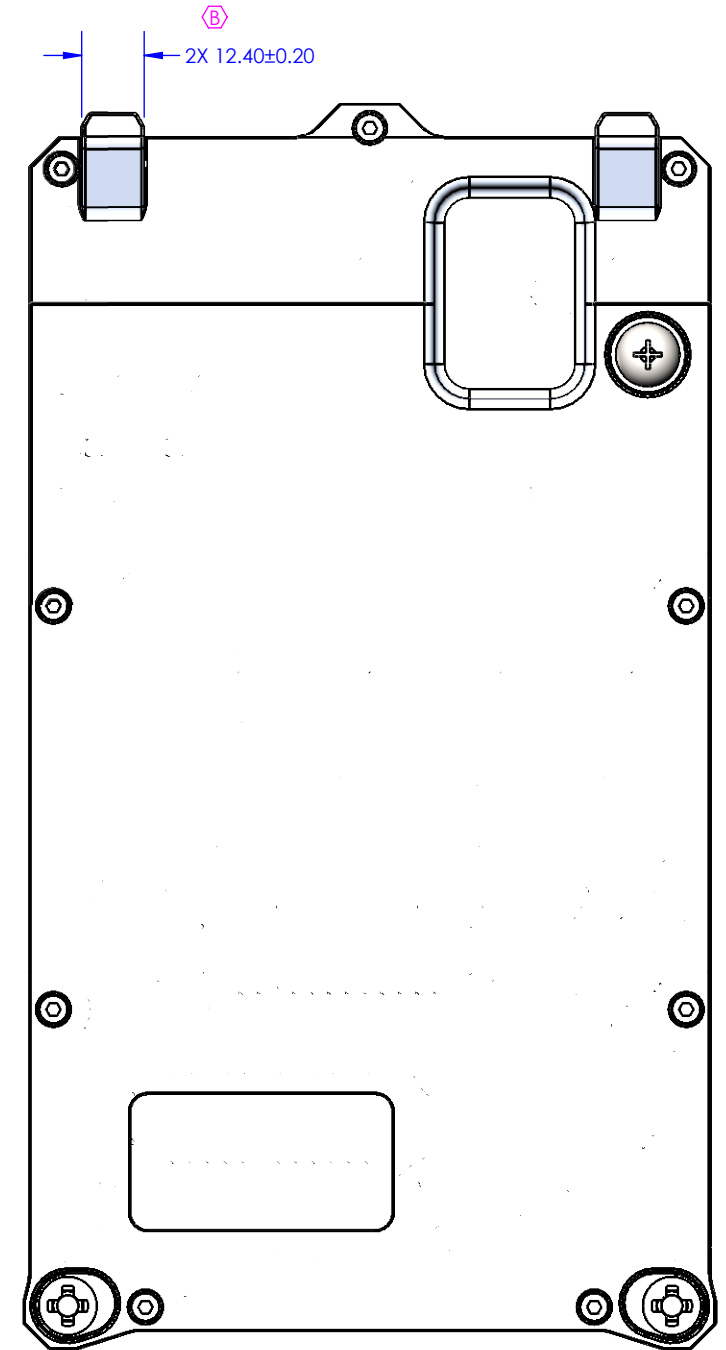
2	-	1	830-01342-2-2	AUTONOMY MODULE 2, WITHOUT 5G, GENERIC
1	1	-	830-01342-1-2	AUTONOMY MODULE 2, WITH 5G, GENERIC
ITEM NO.	-1 QTY.	-2 QTY.	PART NUMBER	DESCRIPTION



Ⓟ



DETAIL B
SCALE 2 : 1



2X M5X0.8 SOCKET HEAD CAP SCREW
4MM HEX DRIVE

PART NUMBER 960-00244	REV B	SIZE B	DO NOT SCALE SHEET 2 OF 2
--------------------------	----------	-----------	------------------------------