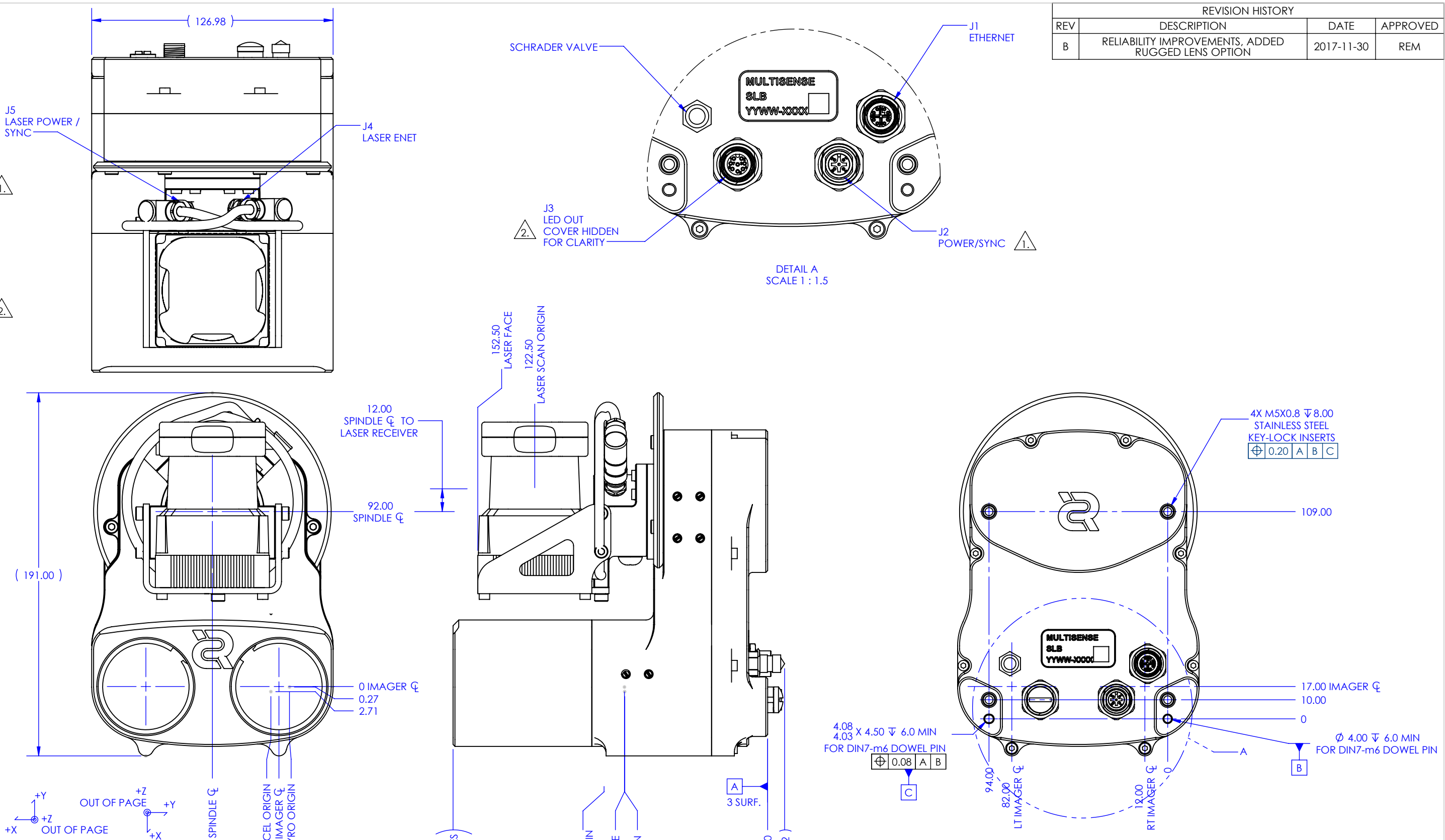


J1	
1000 BASE T	
M12-X8/F	
1	A+
2	A-
3	B+
4	B-
5	D+
6	D-
7	C-
8	C+
J2	
POWER & SYNC	
M12-A5/M	
1	24 VDC
2	CAM TRIG
3	PWR GND
4	PPS
5	I/O GND
J3	
LED OUT	
M12-A8/F	
1	LED 1 +
2	LED 1 -
3	LED 2 +
4	LED 2 -
5	LED 3 +
6	LED 3 -
7	LED 4 +
8	LED 4 -
J4	
LASER COMMS	
M8-4/M	
1	RX+
2	TX+
3	RX-
4	TX-
J5	
LASER POWER / SYNC	
M8-4/F	
1	12 VDC
2	NC
3	SYNC
4	GND

LENS OPTION	"A"
-065	138.5
-060	164.5
-062	151.5

REVISION HISTORY			
REV	DESCRIPTION	DATE	APPROVED
B	RELIABILITY IMPROVEMENTS, ADDED RUGGED LENS OPTION	2017-11-30	REM



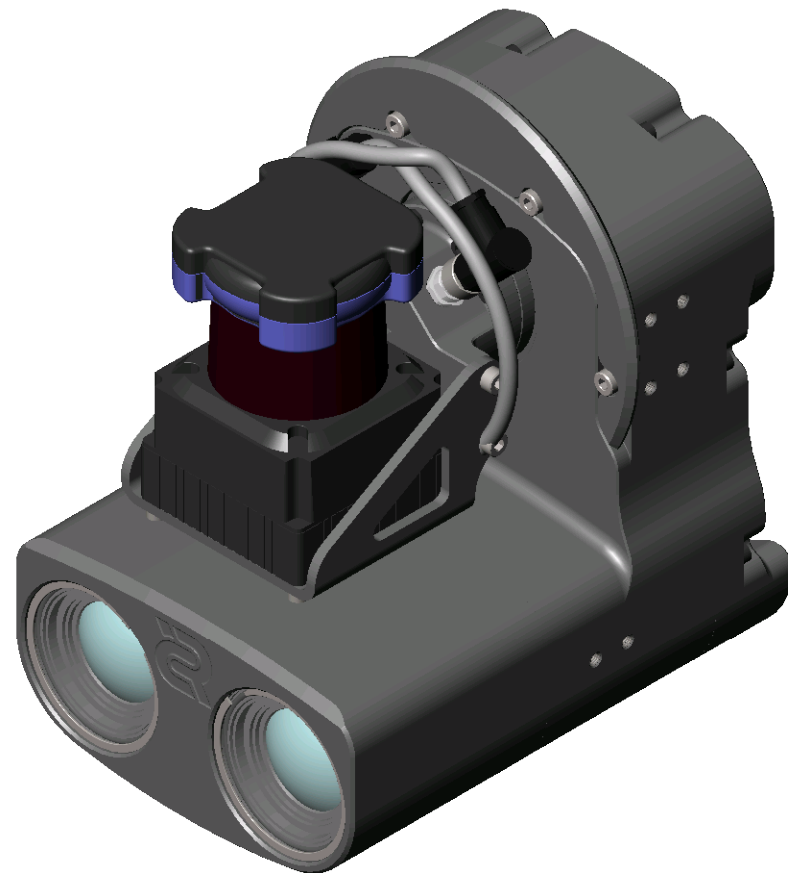
- 4. APPROXIMATE MASS: 3040 GRAMS.
- 3. EXTERNAL SURFACES COATED WITH ANODIC COATING PER MIL-A-8625 CLASS II, TYPE 2, COLOR: BLACK.
- 2. J3 LED POWER CONSTANT CURRENT 1 A MAXIMUM PER CHANNEL OUT.
- 1. 24 V INPUT POWER BUS ACCEPTS 18 V TO 48 V NOMINAL, 3.0 A MAXIMUM DRAW.

NOTES (UNLESS OTHERWISE SPECIFIED)

<p>Carnegie Robotics 4501 HATFIELD STREET PITTSBURGH, PA 15201 412-251-0321 CARNIEGEROBOTICS.COM CAGE CODE: 4QND3</p>	STATE:	ENGINEERING APPROVED	<p>MULTISENSE SLB ICD</p> <p>SIZE B PART NUMBER SLB REV B</p> <p>MATERIAL N/A FINISH N/A DO NOT SCALE</p>
	DRAWN	REM 2017-05-25	
	CHECKED	REM 2017-11-30	
	ENGR	REM 2017-05-25	
APPROVED	REM 2017-11-30	UNLESS OTHERWISE SPECIFIED DIMENSIONS ARE IN MILLIMETERS	
MODEL REV	B 2017-11-30	TOLERANCES: ANGULAR \pm 0.5° SURFACE FINISH: X \pm 1.3 X.X \pm 0.5 X.XX \pm 0.13	

PART CONFIGURATION TABLE									
IR FILTER		IMAGER		LENS		LIGHTING		PROTECTION	
N	NONE	2M	2MP MONO	060	6.0 MM FL	NL	NONE	NM	NO FACEMASK
V	VIS 0, 400-700 UM	2C	2MP COLOR	065	6.5 MM FL	RL	IR LIGHT	FM	FACEMASK
R	VIS 0 + NIR, 400-900 UM	2R	2MP IR ENHANCED	062	6.2 MM FL, RUGGED	PP	IR PATTERN PROJ		
W	WIDE, 400-1100 UM	4M	4MP MONO			VL	VISIBLE LIGHT		
B	BANDPASS, 400-700 UM, 830-870 UM	4C	4MP COLOR						
		4R	4MP IR ENHANCED						

SLB-N-2M-060-NL-NM SHOWN



SLB-N-4R-065-NL-FM SHOWN

