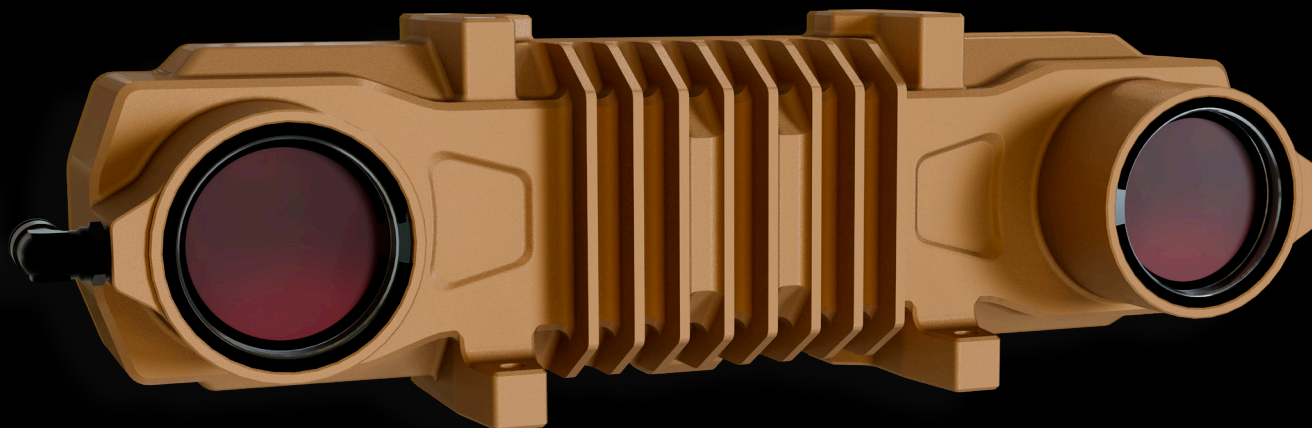


ST25 MEGA

LONG-WAVE STEREO IMAGING
AT A MEGAPIXEL



Resolution: 1280 x 1024

Sensing Type: Uncooled Microbolometer

Pixel Pitch: 10 μm

Frame Rate: 15 FPS

Matching Algorithm: Semi-Global Matching

Stereo Baseline: 25cm

Field of View: 60°W x 58°H

Temperature Range: -40°C to 60°C

Aperture: F/1.4

Ingress Protection: Approximately IP69K

Input Power: 9-36VDC

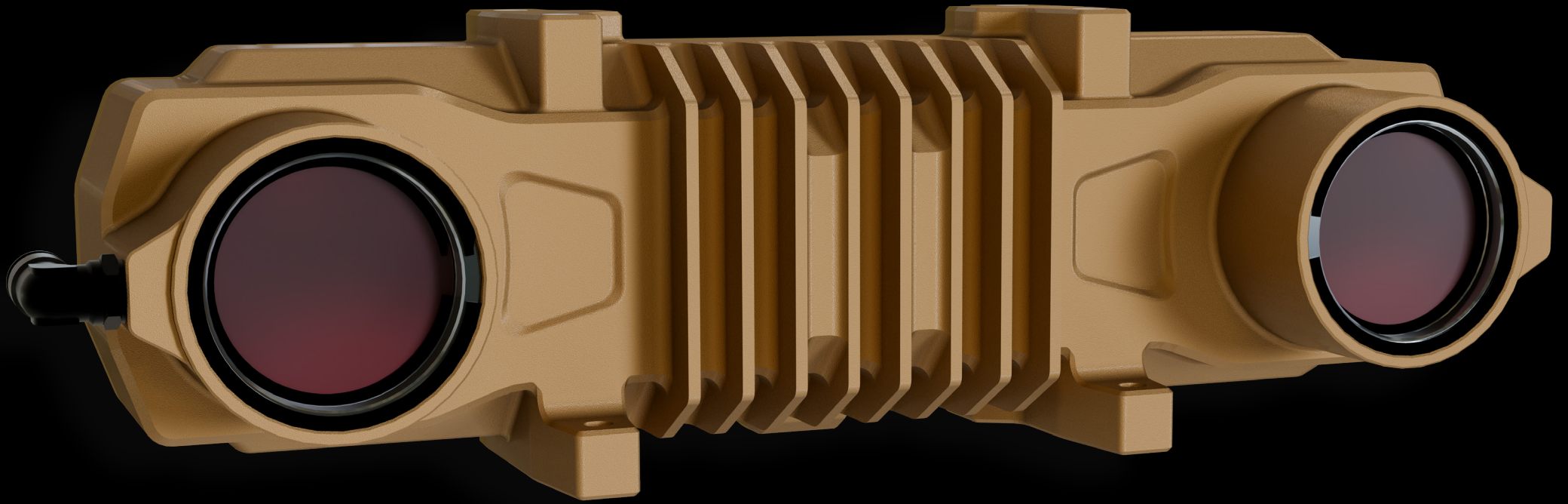
Communication: 1000Base-T Ethernet

Lens Cleaning System

Window Anti-Fog System



Available Winter 2024



WWW.CARNEGIEROBOTICS.COM